



Leading the  
Way in  
Comprehensive  
Earth Survey  
Insights

# Company Profile 2025



## Address

Rajawali Kondominium, Town House 20, Jl. Rajawali Selatan I  
No.7, RT.3/RW.2, Gn. Sahari Utara, Kecamatan Sawah Besar,  
Kota Jakarta Pusat, Daerah Khusus Ibukota Jakarta 10720



## Telephone

+62 821-4150-7533



## Email

[office@esergeosurvey.com](mailto:office@esergeosurvey.com)

# OVERVIEW

---



Established in 2022 with an experienced team, PT. Eser Geosurvey Indonesia traces its roots to the foundation of PT. LECE Indonesia in 2009.

Anchored by astute leadership, we offer an extensive spectrum of survey and analytical services spanning **topography, bathymetry, hydro-oceanography, and detailed engineering design** for harbors and other facilities across Indonesia's waters.

Our evolution has led to a diverse portfolio encompassing **navigation, hydrographic analysis, meteorology-ocean exploration, geophysical and geotechnical assessments, and comprehensive aerial mapping capabilities**, ensuring precise and reliable infrastructure development tailored to meet complex maritime and terrestrial demands.



# PROFILE

## Legality

### Company Data

**Company Name :**

PT. Eser Geosurvey Indonesia

**Address :**

Rajawali Kondominium, Town House 20,  
Jl. Rajawali Selatan I No.7,  
RT.3/RW.2, Gn. Sahari Utara,  
Kecamatan Sawah Besar, Kota Jakarta Pusat, Daerah Khusus Ibukota Jakarta 10720

**Phone Number :**

(021) 22632094

**E-mail :**

office@esergeosurvey.com

### Business Entity

**Deed of Incorporation :**

15 Juli 2022

**Notary Public :**

Muhammad Indra Sentosa,  
S.H., M.Kn.

**Nomor Induk Usaha (NIB) :**

1907220083336

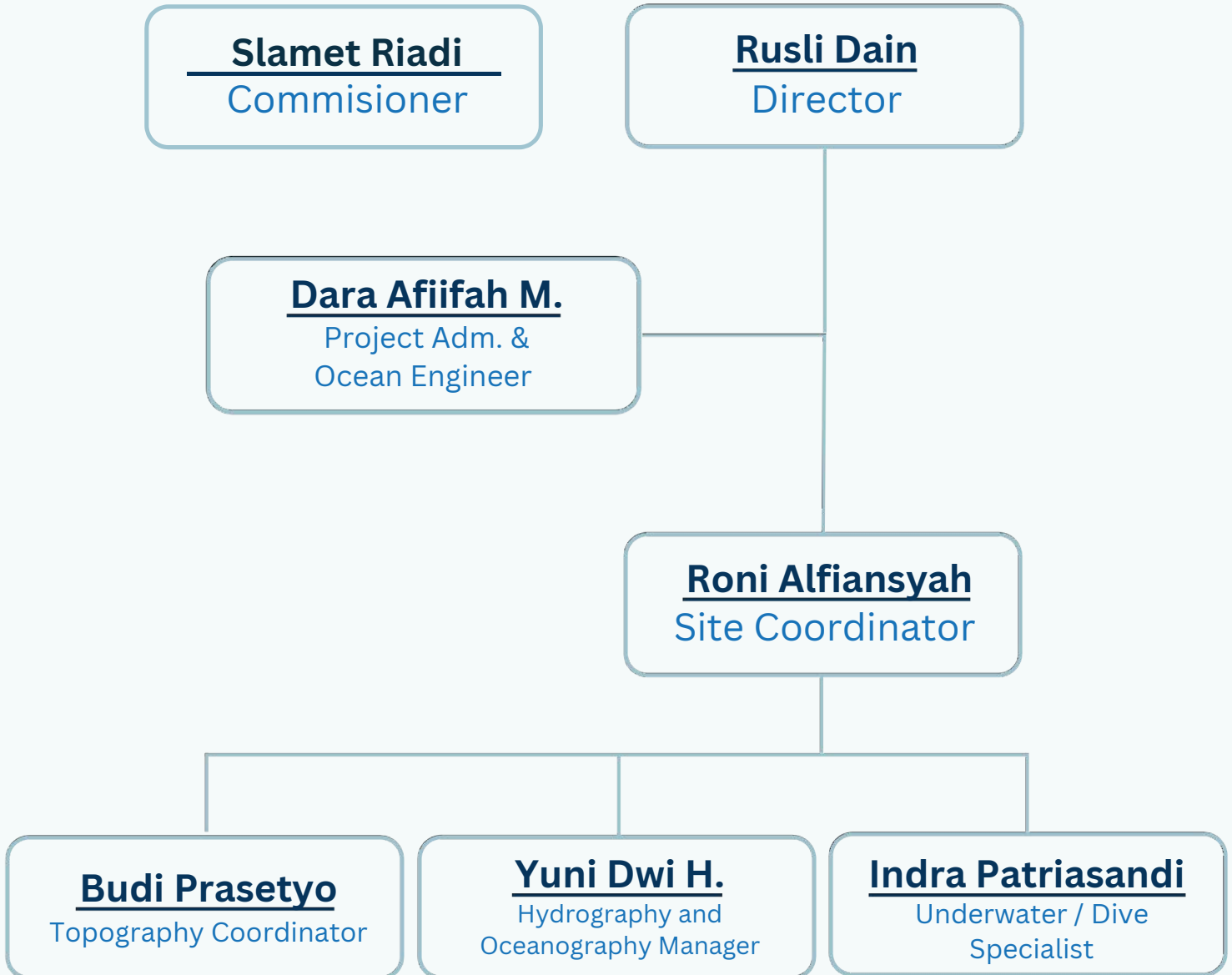
**NPWP :**

20.260.573.5-029.000



# PROFILE

## Structure



# Vission and Mission

---

## VISSION

Our Vision is become a national and international survey company by **offering precision surveys** mapping earth's terrestrial and oceanic realms with excellence

## MISSION

Our mission is to :

- 1.Precise Insights:** Delivering accurate survey services across land and sea, guiding informed decisions.
  - 2.Advanced Analysis:** Employing leading-edge technology to unravel Earth's intricacies for informed decision-making.
  - 3.Empowerment Through Knowledge:** Providing actionable information for sustainable growth and progress.
-

# Values

---

## **PRECISION COMMITMENT**

Our focus lies in delivering data results that match requirements with unparalleled precision and a strong work ethic.

## **TAILORED EXCELLENCE**

We are dedicated to offering the most effective, customized services and solutions that cater to unique needs.

## **EXPERT TEAM**

Our team consists of carefully selected and highly competent professionals who execute projects with expertise and skill.

## **HOLISTIC SURVEY SOLUTIONS**

We stand as the ultimate destination for all-encompassing survey requirements, providing a comprehensive and integrated solution.

## **QHSE PRIORITY**

Quality, Health, Safety, and Environment (QHSE) form the bedrock of our ethical values and are given the highest priority in our business operations.

---



# Our Services

**1**

**Geophysical  
Survey**

**Oceanographic  
Survey**

**4**

**2**

**Geotechnical  
Survey**

**Hydrography  
Survey**

**5**

**3**

**Aerial  
Photogrammetry**

**Topography  
Survey**

**6**



# Project Experiences




# Our Clients

---



**PT BATAMINDO  
GREEN PERKASA**



 大唐米拉务发电有限公司  
PT. Meulaboh Power Generation



**ITS  
TEKNO  
SAINS**

beraucoal



beraucoal  
beraucoal.com



  
ITSKemitraan

# Work Scope

---

## Hydrographic Survey

- Bathymetry
  - Single-Beam Echosounder
  - Multi-Beam Echosounder
- Sub-Bottom Profiler
- Tides Measurement
- Current Measurement
- Magnetometer
- Sediment Sampling
- Water Sampling

## Topography and Geospatial Survey

- Topography
- Drone Mapping (Aerial Photogrammetry)
- Levelling
- Geodetic Observation

## Geotechnical Investigation

- Soil Investigation
  - Boring
  - SPT (Standard Penetration Test)
  - Undisturbed Sample
- CPT (Cone Penetration Test)
- DCP (Dynamic Cone Penetration)
- Geo-Electrical / Soil Resistivity

## Engineering & Design

- Detail Engineering Design
  - Building
  - Road and Area
  - Jetty

# Project Experiences

## 2023 Karangkates Reservoir, Malang, East Java

### Client:

PT. Abirama Prinsip Indonesia, Reconsult, & PLN-NP

### Work Scope:

- Bathymetry Single-Beam Echosounder
- Topography
- Soil Investigation
- Geodetic Observation
- Sub-Bottom Profiler



# Project Experiences

Karangkates Reservoir, Malang, Jawa Timur



# Project

# Experiences

---

## 2023 Villa Biu-Biu, Bali

### Client:

Times International

### Work Scope:

- Bathymetry Single-Beam Echosounder
- Topography
- Drone Mapping (Aerial Photogrammetry)
- Geolistrik Geo-Electrical
- Geodetic Observation



# Project Experiences

## Villa Biu-Biu, Bali



# Project Experiences

---

## 2023 Meulaboh, Aceh

### Client:

PT. Meulaboh Power Generation

### Work Scope:

- Bathymetry Single-Beam Echosounder
- Levelling



# Project Experiences

---

## Meulaboh, Aceh



# Project Experiences

## 2023 RU IV Pertamina, Cilacap, Central Java

### Client:

PT. Divestekno Maritim Anugrah, PT. BMDA, PT. Java Inter Gas (JIGAS)

### Work Scope:

- Bathymetry Multi-Beam Echosounder
- Topography
- Tides Measurement
- Geodetic Observation



# Project Experiences

RU IV Pertamina, Cilacap, Central Java



# Project Experiences

---

## 2024 Berau River, Tanjung Redeb, East Kalimantan

### Client:

PT. Berau Coal  
ITS Kemitraan

### Work Scope:

- Tides Measurements
- Geodetic Observation
- Bathymetry
- Drone Mapping (Aerial Photogrammetry)



# Project Experiences

Berau River, Tanjung Redeb, East Kalimantan



# Project Experiences

## 2024 Grati, East Java

### Client:

ITS Tekno Sains

### Work Scope:

- Magnetometer
- Sub-Bottom Profiler



# Project Experiences

Grati, East Java



# Project Experiences

## 2024 Muaro Jambi, Jambi

### Client:

PT. Wahyu Samudra Indah

### Work Scope:

- Geodetic Observation
- Bathymetry
- Topography
- Drone Mapping (Aerial Photogrammetry)
- Current Measurement
- Sediment Sampling
- Water Sampling
- Soil Investigation (Boring, SPT, Undisturbed Sample)
- DCP
- Detail Engineering Design (Building, Road and Area, Jetty)



# Project Experiences

Muaro Jambi, Jambi



29/11/2024 11:40:36  
103.66581166666668E  
Muaro Jambi  
Muaro Jambi



Mar 12, 2024 9:55  
-1°28'53.671"S 103°39'14.2



29/03/24 09:18  
1.4869366666666664S 103.666535E  
Tebat Patah  
Kecamatan Taman Rajo  
Kabupaten Muaro Jambi  
Jambi

# Project Experiences

## 2024 Karangkates Reservoir, Malang, Jawa Timur

### Client:

PT. Abirama Prinsip Indonesia

PLN-Enjiniring

PLN-Nusantara Power

### Work Scope:

- Topography
- Geodetic Observation
- Bathymetry
- Sub-Bottom Profiler
- CPT



# Project Experiences

Karangkates Reservoir, Malang, Jawa Timur



# Project Experiences

---

## 2024 Tanjung Batu, Belitung, Bangka Belitung

### Client:

PT. Indotek Konsultan Utama

PT. Green Indonesia Alumina

### Work Scope:

- Wave Forecasting
- Bathymetry
- Tide Measurement
- Current Measurement
- Sediment Sampling and Analysis
- Water Sampling and Quality Analysis (TSS)



# Project Experiences

Tanjung Batu, Belitung, Bangka Belitung



# Project Experiences

## 2024 Setokok Island, Batam

### Client:

PT. Indotek Konsultan Utama  
PT. Batamindo Green Perkasa

### Work Scope:

- Tides Measurements
- Geodetic Observation
- Bathymetry
- Current Measurement
- Sediment Sampling and Analysis
- Water Sampling and Analysis
- Wave Hindcasting



# Project Experiences

Setokok Island, Batam



# Project Experiences

---

## 2024 Berau River, Tanjung Redeb, East Kalimantan

### Client:

PT. Berau Coal  
ITS Tekno Sains

### Work Scope:

- Tides Measurements
- Geodetic Observation
- Bathymetry
- Drone Mapping (Aerial Photogrametry)



# Project Experiences

Berau River, Tanjung Redeb, East Kalimantan



# Project Experiences

---

**2025** Kempas, Indragiri Hilir,  
Riau

## Client:

PT. Sumber Kencana Inhu  
ITS Mipcon Konsultan Utama

## Work Scope:

- Tides Measurements
- Geodetic Observation
- Bathymetry
- Current Measurement
- Sediment Sampling and Analysis
- Water Sampling and Analysis



# Project Experiences

Kempas, Indragiri Hilir, Riau

